

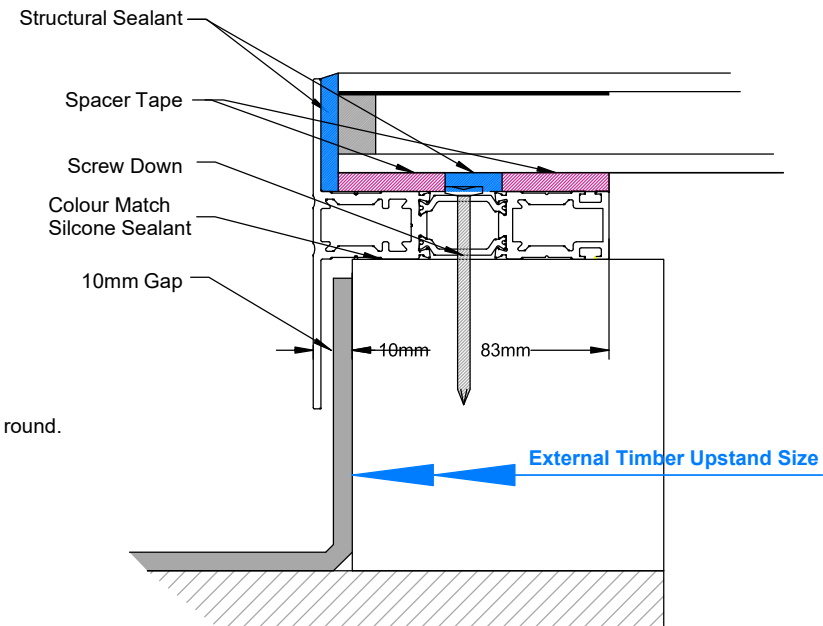


Measuring & Ordering

1. The timber upstand needs to be a minimum of 75mm high and 85mm deep. It can be from flat to upto 5 degrees pitch.
2. When ordering provide the External Timber Upstand size. A 10mm overhang will automatically be added.

Installation.

1. Insert the 2 cleats into each of the corners and peel back the tape. Silicone the profile edges using colour match silicone and tighten screws, ensuring the mitred corners join together well.
2. Once joined, apply colour match silicone sealant to the top of the timber upstand, lift into position on the timber upstand using 2 x 5mm packers to ensure a 10mm gap all round.
3. Once in position, screw down through the thermal break.
4. Ensure the 2 strips of Tremco Spacer Tape are positioned well all round, Fill between the strips with the Tremco Structural Sealant. Remove the plastic cover tape from the spacer tape.
5. Place the glass in position using 1 x 5mm packers to help. Remove the packers and seal around the outside with the Tremco Structural Sealant, creating a slight bevel at the top edge.



AluFoldDirect
Aluminium Bi-Folding Doors, Sliding Doors and Windows

Title
**Installation Instructions
Technic-AI Rooflight**

Drawing No. 101.18 Date Jan 2018

AluFoldDirect t: 01704 260700
Unit 7, Waterside Business Park, e: info@alufolddirect.co.uk
Haslingden BB4 5EN w: www.alufolddirect.co.uk